

Houston West Technology Center

Available Q4 2009

CyrusOne's Houston West data center will be a 94,000 square foot facility located on the North Beltway between I-10 and 290. The facility will be available for customer installation in Q4 2009. Strategically outside of the FEMA 500 year flood plain the facility is being built to withstand category 5 hurricane winds, the data center has 10" of concrete and steel reinforced walls. The hardened facility will be staffed 24X7X365 by both top grade security and expert system and network engineers.



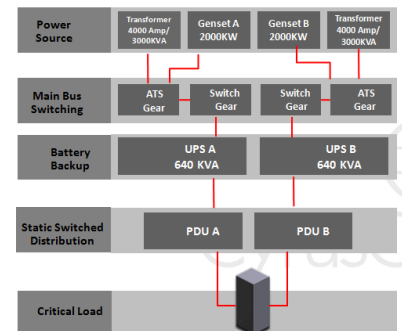
DATA CENTER

- SAS 70 Type II Compliant
- 36" Raised Floors
- On-site 24x7x365 security
- Bio-metric & card key access
- Outside new FEMA 500 year flood plain



REDUNDANT POWER

- 2N Power Architecture
- Redundant Generators
- Multiple Fuel Tanks
- On-site Diesel
- Redundant Transformers
- Multiple UPSs and PDUs (2N)



REDUNDANT COOLING

- Dual Plum Return Cooling Design
- Redundant CRAC Units
- Humidity and Temperature Controlled
- Computational Fluid Dynamics (CFD) Analysis

CONNECTIVITY

- Multiple Carriers Lined Up for Installation
- Redundant Dark Fiber, Gig-E, Wireless MAN Backbone
- Redundant self healing SONET ring connections
- No single points of network failure
- Technical staff on-site 24X7X365

